

Apertura

Intro

Aire de Huayño ♩ = 100

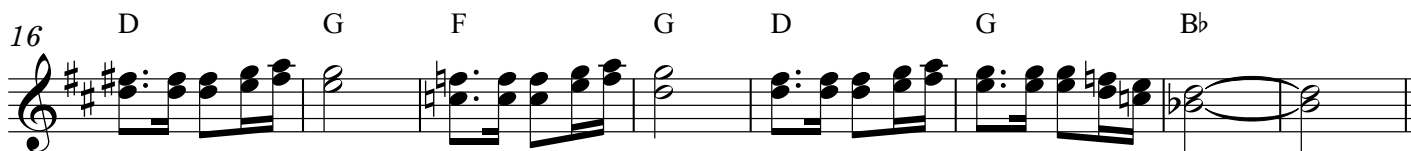
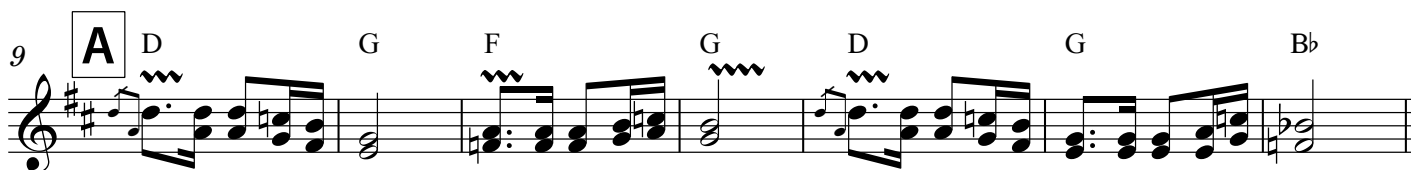
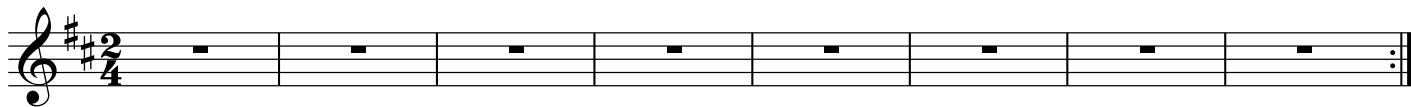
D

C(add9)

Em⁷

Em⁷/B^b

D



Apertura

44 D C(add9) Em7 Em7/Bb D

51 **A'** D G F G D G Bb

58 D G F G D G Bb Bb

66 **B'** G D F#m Bm C G

72 I. F#m Bm 2. F#m Bb C A7

79 D F#m

83 Bm G A

Apertura

87 D F#m

91 Bm G A

95 D F#m

99 Bm G A D