

Charango1 (TAB)

# Apertura

## Intro

Aire de Huayño ♩ = 100

D C(add9) Em<sup>7</sup> Em<sup>7</sup>/B<sup>b</sup> D

9 **A** D G F G D G B<sup>b</sup>

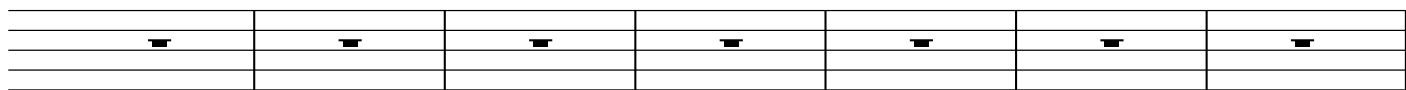
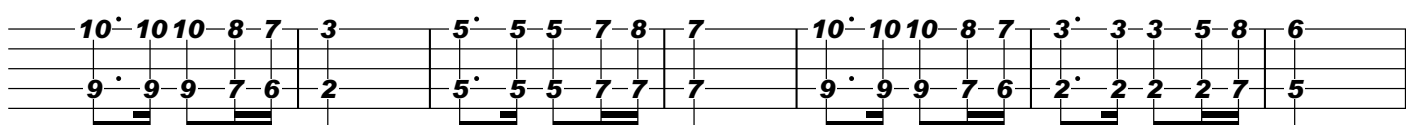
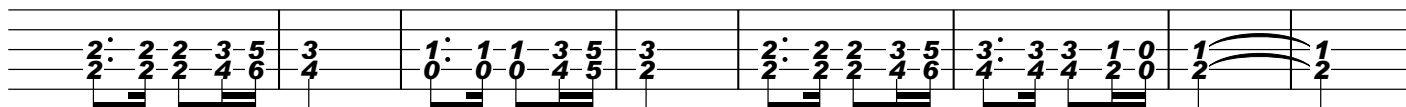
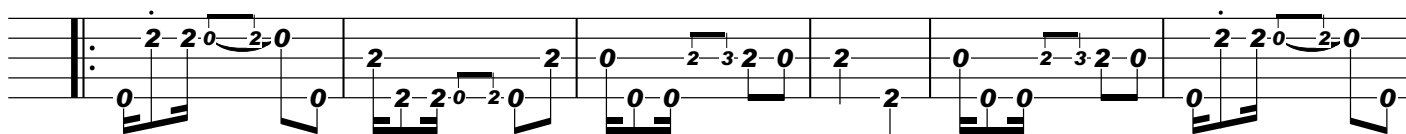
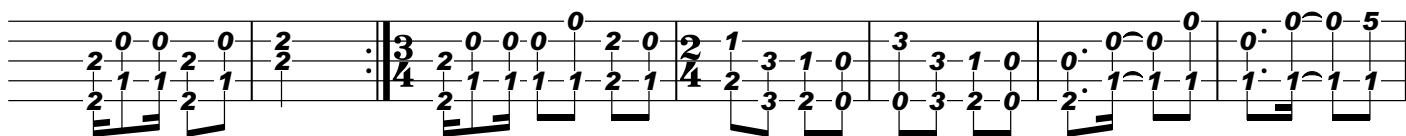
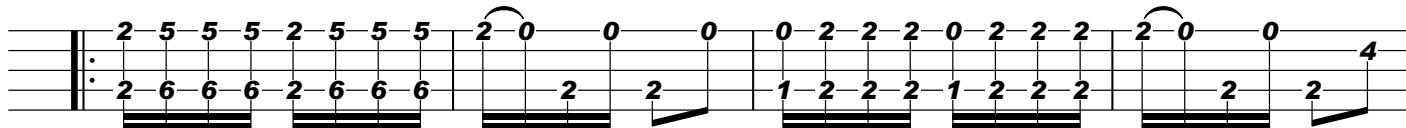
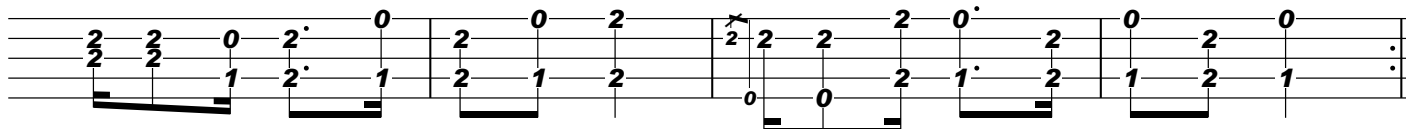
16 D G F G D G B<sup>b</sup>

24 **B** G D F<sup>#</sup>m Bm C G

30 F<sup>#</sup>m Bm F<sup>#</sup>m B<sup>b</sup> C A<sup>7</sup>

36 **C** D F<sup>#</sup>m

40 Bm G A

Apertura44 D C(add9) Em<sup>7</sup> Em<sup>7</sup>/B<sup>b</sup> D**A'**51 D G F G D G B<sup>b</sup>58 D G F G D G B<sup>b</sup> B<sup>b</sup>66 **B'** G D F<sup>#m</sup> B<sup>m</sup> C G72 <sup>I.</sup> F<sup>#m</sup> B<sup>m</sup> <sup>2.</sup> F<sup>#m</sup> B<sup>b</sup> C A<sup>7</sup>79 D F<sup>#m</sup>83 B<sup>m</sup> G A

Apertura

87 D F#m

2 0 0 2 2 2 | 5 5 5 2 0 0 | 5 5 2 2 2 10 10 | 9 9 7 7 0 2 2 2

91 Bm G A

2 2 2 3 5 5 3 5 | 2 2 3 3 2 2 2 2 | 3 3 3 3 5 5 7 7 | 5 5 5 5 7 7 9 5

95 D F#m

2 5 5 5 2 0 0 2 | 5 5 2 2 2 10 10 | 9 9 7 7 0 2 2 2 | 0 2 2 2 0 2 2 2

99 Bm G A D

2 2 2 3 5 5 3 5 | 2 2 3 3 2 2 2 2 | 3 3 3 3 5 5 7 7 | 5 5 5 5 7 7 9 5